



# S P L A S H !



A group of approximately 12 children, mostly young girls, are standing in a line on a blue mat, raising their arms in excitement as a large splash of water falls over them. The water is white and frothy, creating a large cloud of droplets. In the background, there is a large orange bucket suspended by a metal frame, and other water play structures like a yellow wheel and a blue slide. The setting appears to be an outdoor water park or splash area at an aquarium.

## Our Mission

Connecting people with nature and inspiring conservation of the Gulf of Mexico.

## Our Vision

To be a nationally recognized Aquarium leader in creating entertaining, educationally enriching programming; conducting wildlife rehabilitation; and supporting conservation.





## Greetings...

We had a terrific year in 2011; the opening of the new *H-E-B Splash Park* and *Owen's Paleo Park* and record setting attendance certainly top our list of achievements. The Aquarium made a significant economic impact to our region — more than \$43 million, including \$6.5 million in lodging sales and almost \$4 million for city, county and other taxing entities. More importantly, 2011 represents the first year of an ambitious, new 10-year master plan that will completely reposition the Texas State Aquarium. Over the last several years, Aquarium trustees and staff have been hard at work crafting a new strategic plan and master plan; and that plan is now guiding our current development. The opening of *Stingray Lagoon* this year represents the second major initiative in this ambitious plan, and we are already seeing positive results. Through August of 2012, attendance is up six percent. Our goal is simple; we plan to transform the Aquarium from its current status as a leading regional aquarium and top cultural attraction of South Texas into one of the top aquariums in the country. A complete renovation of our existing Gulf of Mexico building, a regional conservation and wildlife rehabilitation facility, an ocean discovery center, and a vast, new Caribbean experience are some of the major components that will make up the Texas State Aquarium of the future. Achieving this vision is critical for the Coastal Bend. Our region is poised to become the center of Gulf of Mexico study, and our economy and livelihood are inextricably linked to this wondrous natural resource. As we continue to entertain and educate millions of guests, we hope to create the next generation of ambassadors who are passionate and ready to take action to help conserve the Gulf. So join us on this journey, and stay tuned for more details. It's going to be an exciting trip.

*Lee Jordan*

Lee Jordan  
Board Chair

*Tom Schmid*

Tom Schmid  
President and CEO







## A Marine Love Story

Fortunately, Erin Erben's husband isn't the jealous type. Although the high school sweethearts have been married 13 years, Erin's love affair with the Texas State Aquarium goes all the way back to eighth grade. That's when her basketball coach asked what her plans were for the summer and encouraged her to volunteer at the Aquarium.

"I fell in love with the Aquarium at the age of 14, and, I knew my work would involve marine life," Erin says. The Corpus Christi native attended Texas A&M University – Corpus Christi, blending her marine studies with her work at the Aquarium.

"When I graduated, I had a job waiting for me," Erin says, and her smile suggests it is her dream job. In 2008, she began working with dolphins and discovered her passion for tapping into their natural intelligence and aptitude.

"You have to show that you respect their home and their space," she explains. "Then you begin to build a trust and a bond with them. Training can't happen without that trust. And I've learned it's okay to be silly. Working with the dolphins is an amazing experience. When I step out there, all of life's worries or problems just disappear."

So can some of the training techniques be applied to her own kids, now in elementary and middle school?

"I'd like to say my children are so well-behaved, I've never needed those techniques. But I'd be lying," she laughs. "Yes, there are many skills that a trainer can take home and apply — universal concepts that work for animals and kids — like ignoring bad behavior and rewarding positive behavior."

Erin believes the Aquarium provides a hands-on learning experience for children — showing them the environment and animals that live nearby — and creates a love of nature. She wants visitors to connect with the dolphins, so she especially enjoys the Deckside Dolphin Encounter because participants are allowed to bond with the animals in close proximity. But that's not the only fun in her day.

"The kids are awesome," she says. "Their eyes are bright; they're having a great time, and then...splash! That's my favorite part of the day — getting the audience wet!"

Although Erin is partial to Kai and Shadow and *Dolphin Bay*, her tenure with the Aquarium is long and varied...so she has a bit of advice for visitors:

"Take your time going through all the exhibits, and then go back through again to see all the things you missed. The little fish, the tiny corals...every bit of life in the Aquarium has a story to tell us about our environment, and allows us to get to know and appreciate marine life. It's simply an amazing experience."

For Erin Erben, the love story continues every day.





At the center of our mission are the animals who call the Texas State Aquarium home, and our guests who come to see and learn about them. By introducing new exhibits, we create an exceptional visitor experience that entices first-time guests and tourists, yet also gives Aquarium members and regional residents fresh reasons to come back again and again.

---

### H-E-B Splash Park

The Aquarium launched its 2011 summer season with a cool treat for guests – the *H-E-B Splash Park*. The first zero-depth wetlandscape water play area in the Coastal Bend was an instant hit. Families enjoy water spray jets, interactive water features, water cannons, and Owen's *Paleo Park*, a fossil dig site named in honor and memory of well-known local geologist, Owen Hopkins, and funded by Owen's partners at Suemaur Exploration & Production. Owen's *Paleo Park* allows Aquarium guests to unearth fossilized remains of animals that roamed the Coastal Bend 13,000 years ago.







## Wetlands Boardwalk

Another new venue showcasing our natural coastal ecosystem opened thanks, in part, to a grant from the Pepsi Refresh Project – Do Good for the Gulf campaign. The *Wetlands Boardwalk* allows Aquarium guests to explore a wetland environment while learning about the importance of marsh areas and their impact on the ecosystem.

## Flower Gardens Improvements

With funding from the Flower Garden Banks National Marine Sanctuary and the National Marine Sanctuary Foundation, the Aquarium made upgrades to the *Flower Gardens* exhibit to make it more interactive for visitors as they learn about coral reef systems, including the use of microphone-equipped underwater aqua masks that allow the divers to communicate live with guests.



## Lionfish Exhibit

Early in 2011, the Aquarium introduced a new exhibit housing six lionfish. This species is native to the Indo-Pacific region and is considered invasive in the Gulf of Mexico. With population growth and their lack of natural predators, lionfish are damaging the established natural food web. The lionfish at the Aquarium help us communicate our messages of education and conservation.







# Making a Difference

A family visit to the Aquarium is not the only way to understand the important messages we share about conservation, education and rehabilitation. The Aquarium also engages students through onsite and offsite events, distance learning, camp-ins and teacher workshops.

## South Texas Oyster Restoration and Awareness

In February 2011, the Texas State Aquarium and a delegation of Moody High School students participated in the Third National Student Summit on the Oceans and Coasts in Washington DC. Through a partnership with Harte Research Institute (HRI) at Texas A&M University-Corpus Christi, students have participated in an oyster shell recycling and reef restoration program. This program reclaims oyster shells from local restaurants and returns them to local oyster reefs.

At the Summit, students presented their efforts on how they raise awareness about the effects of changing climate on the ocean and oyster populations in South Texas. They also demonstrated how each citizen can participate in conserving this resource. Students interacted with members of Congress, Administration officials, and ocean conservationists during the Summit.

The Summit launched what has now become the South Texas Oyster Restoration and Awareness (STORA) program. Since the Summit, the Moody students have developed educational materials and are participating in local fairs and festivals. The students highlight the ecological importance of oysters in Texas bays and promote HRI's oyster reef restoration project, engaging children and families with fun oyster-themed activities. In August, STORA received a grant of \$30,280 from the State Farm Youth Advisory Board, a diverse group of youth ages 17-20 who

lead and oversee a \$5 million/year signature service-learning initiative, empowering youth to implement service-learning in communities across the nation. The funding has enhanced STORA by broadening the students' reach to more audiences and allowing integration of field investigations at the restoration site to the students' curriculum.

*"Just being able to provide this kind of exposure to my students is fantastic."*

—Sheila Gardner, Educator  
Drew Central Elementary;  
Monticello, AR







## Texas State Aquarium's Aquavision

Aquavision is broadcast live from the Flint Hills Resources Distance Learning Studio at the Texas State Aquarium. Students view and learn about the animals and the Gulf of Mexico through a series of real-time cameras and live presentations. In 2011, the Aquarium received another generous award from Flint Hills Resources to fund the purchase of new web-based software that enables classrooms to connect to Aquavision programs without a networked conferencing unit.

*"Families in Kentucky were able to visit an aquarium they would not normally be able to visit."*

—Kate Irwin, Educator  
Jessamine County Public  
Library, Nicholasville, KY

## Outdoor Learning

Texas State Aquarium SeaCampers wrap up a week of learning with a day of first-hand research at the Flint Hills Resources Wildlife Learning Preserve. The Preserve, a 120-acre tract of land, was set aside by Flint Hills Resources to protect and enhance the wetlands and wildlife habitat area that surrounds the west plant, located near IH-37.

Campers venture into the Preserve to observe birds, reptiles and small mammals, as well as take plaster molds of animal tracks found on the trail. They're able to apply their experiences in the classroom, appreciate environmental stewardship, and see first-hand how a local corporation is actively participating in conservation.

*"The students showed a deeper interest in the subject. Their questioning showed that they were learning and that they wanted to know more."*

—Second Grade Educator  
Felix G. Botello  
Elementary, Dallas, TX

## Oceanography Challenge

Eight middle school teams competed in the Aquarium's annual Oceanography Challenge Tournament, funded by the Coastal Bend Community Foundation and hosted by Texas A&M University-Corpus Christi. The timed competition features questions covering the biology, physics, geology and chemistry of the Gulf of Mexico, as well as related geography, technology, history and current events. Many Oceanography Challenge students go on to compete in the National Ocean Sciences Bowl at the high school level.

## Education Program Participants

**42,246**

Formal and Informal Programs

**8,687**

Education Outreach Programs

**3,407**

Distance Learning Program

**865**

SeaCamp

**153**

School Intersession

**1,650**

Overnight Camp-ins

**5,301**

Education Programs at SeaLab

**132**

Teacher Workshops

**521**

Member Education Programs







## “Wide-eyed wonderment!”

That sums up what Chris Swanson sees in children who visit the Texas State Aquarium. Experiencing their joy is part of what motivates him as a volunteer diver.

Of course, there's also Chris' 20-year love of diving as a hobby. So when he retired and moved to Corpus Christi with his wife, he was immediately drawn to the *Flower Gardens* exhibit and thought, “I can do that!”

Now, four years later, this underwater jack-of-all-trades begins Tuesday and Thursday mornings by diving *Dolphin Bay*, scrubbing walls and windows, and vacuuming the bottom. By the time the Aquarium opens, *Dolphin Bay* is pristine and ready for Shadow and Kai to thrill the crowds. Then, Chris moves on to the *Flower Gardens* feeding program, or to help out with cleaning or fixing other exhibits.

“The most rewarding part of volunteering at the Aquarium is the fun,” Chris says. “Sure it's work too, but watching the kids enjoying themselves in this great environment is entertaining in itself. You hear them constantly say, ‘Come see this!’ or ‘Look at that!’ and you know they're learning and having a great time, too.”

Youngsters aren't the only ones learning. Chris says he learns something new every day while volunteering, from the names of different species and their behaviors to the finer points of dolphin care. He notices that adult visitors value the educational aspect of the Aquarium just as much as the kids and are awed by its beauty.

“I hear the parents and grandparents saying ‘This is just so beautiful.’...almost as though they didn't expect it,” he notes. “And they take so many pictures of the exhibits and also of their kids. For the kids, it's a great experience, but for the adults...it's a memory.”

After Chris' stint in the Navy and his career with a utility company in Iowa and Illinois – which included some very cold winters – the Swansons love the warm weather of South Texas. They're active in their church, participate in a local beer-brewing club, and are members of the Texas Jazz Festival. They enjoy inviting their three sons and grandchildren – now living in Iowa, Tennessee and Florida – to visit them in Texas and tour the Aquarium. His advice to his family is the same he would share with prospective Aquarium guests: “Get here early, and allow plenty of time. There's no way to anticipate how much there is to see and do.”

According to Chris Swanson, they should also plan a little extra time for... wonderment.

### Volunteer Program Highlights

**215**  
Active Volunteers

**20,496**  
Total Hours Contributed

**\$197,767**  
Value of Hours

**1,678**  
Dive Hours



# 2011 Aquateens of the Year



## Katherine Messer

Katherine Messer made a splash and didn't even know it.

As an AquaTeen volunteer, she enjoyed puppets, Legos, and "fishing" with kids in the Aquarium's Family Learning Center. One day at her little sister's kick-ball practice, a mom recognized her from the Aquarium and said, "You played with my girls one day when we were there. They had such a fun time."

Katherine, 17, says, "I smiled and said 'What a small world.' Never had I expected to make such an impact on people's experience at the Aquarium that they would recognize me outside of it. I was proud that I had made that kind of impact for at least one family."

Katherine is a senior at Tuloso-

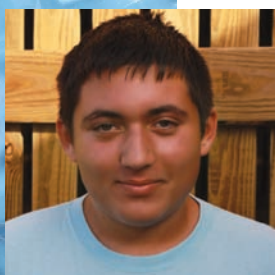
Midway High School and has been volunteering at the Aquarium since 2009. She loves to read, plays the trumpet in the band and will be president of the drama club this year. She'll attend Del Mar College in the fall.

And what about the splash of being named AquaTeen of the year?

"I had no idea it was coming or that I stood out enough for anybody to even think of me for that award."

And her favorite part of the Aquarium?

"I enjoy every aspect of the Aquarium. I don't think there is anything that I don't like, but since I have to choose, my favorite feature would be the employees. They are all so friendly and willing to help you out or share a smile."



## Robert Valdez

In his first year as an AquaTeen volunteer, Robert Valdez went from rookie to pro...as in proactive, proud and professional. This 15-year-old undertook every task with enthusiasm, going beyond basic requirements and inspiring his fellow volunteers, as well as Aquarium staff members.

His motivation is simple. Robert says the greatest reward from his AquaTeen experience is "helping make this Aquarium great!" He put his excellent communications skills to use in obtaining guest satisfaction surveys and answering visitor questions, and he's quick to name his most memorable experience.

"I had to translate for a woman who was deaf," says Robert, who was eager to make sure the

hearing-impaired guest enjoyed all the Aquarium has to offer.

Robert racks up about 40 hours of Aquarium service hours during each summer month, but has to pull back just a bit during the school year to make time for studies and other activities. The Ingleside High School sophomore is a discus thrower and will be an athletic trainer at the school this year. He also plays trumpet in the school band.

Even after being named AquaTeen of the year, you won't find Robert tooting his own horn at the Aquarium, but staff members say his pleasant and welcoming disposition makes him a great fit with the AquaTeen program now and into the future. After just one year, Robert is a pro...as in promising.





## Community Highlights

**528,475**  
General Admission

**19,195**  
On-site Rentals &  
Special Programs

**547,670**  
Overall Attendance

**6,561**  
Aquarium Memberships:  
Family Memberships  
(30 % increase over 2010)

**31**  
Number of happy couples  
saying "I Do" at the Aquarium

## Impacting Our Community



### Attendance Soars in 2011

The Texas State Aquarium enjoyed the highest annual attendance since opening in 1990. More than 540,000 guests experienced our animals, exhibits and shows, and nearly 60,000 students participated in various education programs. In addition, more than 13,000 guests visited the Aquarium during Dollar Days in January and December.

The opening of the *H-E-B Splash Park* and *Owen's Paleo Park* played a big role in the attendance boost, along with great summer weather, no hurricanes and an improving regional economy.

The Aquarium also had an economic impact of more than \$43 million on Corpus Christi, supporting 747 area jobs with annual salaries totaling \$15 million.





# Financial Summary

	2011	2010
<b>Attendance*</b>	<b>547,670</b>	<b>482,032</b>
<b>Support and Revenues</b>		
General Admissions	\$4,851,508	\$4,146,849
Gift Shop & Concession Sales	\$1,929,190	\$1,968,987
Education Programs	\$902,932	\$664,640
Donations, Grants & Special Events	\$898,816	\$451,991
Membership	\$759,895	\$532,779
Facility Rental Income & Group Sales	\$652,322	\$645,172
Vending & Other	\$630,227	\$494,696
In-Kind Donations	\$109,553	\$24,059
Investment Income	\$58,800	\$337,058
<b>Total Support &amp; Operating Revenues</b>	<b>\$10,793,243</b>	<b>\$9,266,231</b>
<b>Expenses**</b>		
Salaries & Benefits	\$4,565,331	\$4,227,132
Aquarium Operations	\$3,339,319	\$2,620,418
Cost of Goods Sold	\$603,972	\$743,514
Investment/Interest Expense	\$102,853	\$112,101
Advertising	\$483,376	\$406,884
Debt Service	\$277,281	\$252,173
Capital Expenditures	\$862,958	\$449,721
In-Kind Donations	\$109,553	\$24,059
<b>Total Operating Expenses</b>	<b>\$10,344,643</b>	<b>\$8,836,002</b>

\*Includes After Hours Evening events

\*\*Total Expenses does not include Depreciation Expense



# 2011 Celebrations & Events

## Beach Ball

Beach Ball is one of the most dynamic events in Corpus Christi and an important component of the Aquarium's fundraising efforts. In 2011, Beach Ball was held on April 9 and led by Gail Hoffman, a Charter Volunteer and former Board Member. Beach Ball was celebrated on the Aquarium grounds to raise funds for the *H-E-B Splash Park*. Attendees enjoyed fine dining and dancing to Houston band, Doppelganger. Thank you to all of our Beach Ball sponsors and attendees for another wonderful event!



Connecting with  
people via  
social media

19,179

Number of Facebook Likes

500

Number of Twitter Followers

254,832

Number of  
unique website visits

## AQUA Society

The AQUA Society was established in 2011 to honor the Aquarium's most visionary donors – individuals, businesses and organizations who have supported the Aquarium with cumulative gifts of \$25,000 or more. The seven benefactor levels include:

Aquarium Patron (\$25,000 to \$49,999)

Aquarium Fellow (\$50,000 to \$99,999)

Aquarium Guardian (\$100,000 to \$149,999)

Aquarium Conservator (\$150,000 to \$249,999)

Aquarium Steward (\$250,000 to \$499,999)

Aquarium Ambassador (\$500,000 to \$999,999)

Aquarium Visionary (\$1,000,000+)



## Golden Star Award

The Aquarium presented its most prestigious award to two recipients in 2011. The Golden Star Award is the highest honor the Aquarium bestows upon an individual, and it recognizes outstanding service and meritorious contributions to the development of the Texas State Aquarium.

Ms. Bonnie Pereida was honored posthumously for her numerous contributions to exhibits and projects over the past several years. Longtime Aquarium partner H-E-B was honored for two decades of support, including the grand opening of the Aquarium, *Dolphin Bay* and the *H-E-B Splash Park*.









# Good Partners

With a similar customer base, Whataburger and the Texas State Aquarium are a good fit, according to Whataburger Chairman of the Board, Tom Dobson.

"The Aquarium serves a very broad, geographic demography from the state of Texas," Dobson says. "Whataburger, through its statewide restaurant network, serves the majority of the same guests. Therefore, it is a good match."

He also sees a parallel with Whataburger's philosophy of exceptional customer service, crediting Tom Schmid and Aquarium staff for "executing flawlessly every day to make sure the visitor has a memorable experience."

Like the best partnerships, the collaboration has been a win-win for both entities. Tom says Whataburger benefits from the brand exposure and recognition, while the Aquarium has enjoyed the longtime support of both Tom's families – the Whataburger family as well as his own – in addition to his personal leadership.

Tom has served on the Aquarium Board of Trustees since 1996 and also served three years as president. During his leadership, the Aquarium underwent its most ambitious expansion period to date, culminating with the successful completion of a \$15 million capital campaign, the establishment of an endowment, and the opening of *Dolphin Bay* in 2003. No wonder that's his favorite exhibit.

"My favorite memory is the opening and ribbon cutting of *Dolphin Bay*. We started with nothing, raised the funds, designed and built the facility, sourced the dolphins, and opened to serve the guests."

As a businessman, Tom is quick to point out the importance of the Aquarium to the city of Corpus Christi. "The Aquarium is an important economic generator for Corpus Christi and North Beach," he says. From a community perspective, "the educational/outreach programs are first class and in constant demand throughout the Coastal Bend community."

"The Aquarium is the crown jewel of tourism for Corpus Christi," he adds. "It's a must-see. The experience is equal to or better than any aquarium visit you will encounter in the United States, with the exception of a few of the very large well-funded national aquariums."

And on the subject of funding, Tom sees benefit for both individual and corporate financial support of the Texas State Aquarium.

"You can continually see your dollars and personal time spent working for the Aquarium demonstrated in the exhibits and programs offered. The leadership and staff continue to grow and enhance the visitor experience through more 'user involved' exhibits, and the Aquarium can continue its positive growth with increased corporate support, individual support and foundational support."









## Aquarium Partners

Sharing the Spotlight with our valued supporters

### Reliant and Navy Army Dollar Days

"Navy Army is proud to partner with TSA to provide Dollar Day for our community. Education is one of our focus areas for corporate support. We are very lucky to have the TSA in our backyard to provide our families with ongoing marine education."

—Wayne Vann, President, Navy Army Community Credit Union



### H-E-B Splash Park

H-E-B's support of the Texas State Aquarium goes back to its earliest days as an Aquarium founder, and H-E-B also made possible the opening of Dolphin Bay. In 2011, the H-E-B Splash Park opened, offering families a safe, fun way to cool off during their Aquarium visit. The zero-depth waterscape features a variety of interactive water features. The addition of the H-E-B Splash Park is credited with boosting 2011 Aquarium attendance.



### Bay Ltd., A Berry Company

"Bay's corporate partnership with the Texas State Aquarium has provided us with a way to spread the opportunity to visit this great facility to all of our Corpus Christi employees. It is seen by them as a valuable benefit. And, just as important, they are never disappointed with the presentation."

—Edward A. Martin/Bay Ltd., A Berry Company







# A Heritage and Passion for Conservation

When Bruce Hawn talks about conservation, people listen. Early on, he acquired an appreciation for the natural resources of South Texas and the Gulf of Mexico as he fished local waters. And he was influenced by his grandmother's interest in the plight of the world's wildlife after she and Bruce's grandfather traveled to Africa. That interest and commitment resulted in the establishment of the innovative zoo that bears her name, the Gladys Porter Zoo in Brownsville.

Bruce has served as TSA board chair and is a current member on the Executive Committee. Today Bruce, through his leadership of the Earl C. Sams Foundation, supports numerous organizations that focus on education and conservation, and the Texas State Aquarium holds special appeal for him.

"The Aquarium does a good job of teaching people about the resources we have here," he says. "And it's the number one conservation-supporting organization in the region."

In 2007, the Hawn Wild Flight Theater opened to rave reviews, and Bruce understands its appeal.

"You have to get people interested in the environment in an entertaining way. If the birds were stuck in a cage, they'd still be pretty...but it wouldn't bring out the passion in people, and it wouldn't do anything to help develop another generation of conservationists."

He points to the authenticity of *Islands of Steel*, and the entertainment factor of *Dolphin Bay* and *Wild Flight*, and is excited about the *H-E-B Splash Park*.

"It's a great addition that will get the kids here, and you've got to get 'em here before you can educate them."

Bruce personally understands that beyond education, visits to the Aquarium can become special memories for families.

"One of my favorite experiences was the Dolphin Encounter. Our family had a foreign exchange student from Thailand staying with us, and she had never seen a dolphin up close. Seeing the kids' faces light up was just great, and our guest student was so influenced by the experience, she incorporated the word 'dolphin' into her email address."

If you find yourself sitting next to Bruce Hawn on an airplane and you ask him about the Texas State Aquarium, what will he say?

"It's a great all-around experience to see what the flavor of the South Texas and the Gulf of Mexico is like. The Aquarium is one of the most important economic engines in the region, it educates the community, and it's one of the few institutions around that rehabilitates birds and aquatic sea life. Conservation begins here."

He should know.

## Rehab Recap

When a female Swainson's hawk was found injured on EOG Resources' lease in San Patricio County and subsequently transported to the Texas State Aquarium's rehabilitation hospital, EOG employees and leadership mounted a two-week donation campaign to help. In October, the company presented a check to the Aquarium's Wildlife Rehabilitation Program.

Four Great horned owls were found orphaned and brought to the Aquarium, where they were rehabilitated and conditioned for flight and hunting prey. After their care, the owls were released back into their natural habitat at Hazel Bazemore County Park.

## 2011

# 1

**Atlantic Bottlenose Dolphin transferred to Galveston**

**Birds:**

**292**  
**Patients**

**65**  
**Releases**

**21**  
**Transferred**

**62**  
**Different Species**



# AQUA

## SOCIETY



The AQUA Society was established in 2011 to honor the Texas State Aquarium's most visionary donors. Individuals, businesses and organizations who have generously supported the Aquarium with cumulative gifts of \$25,000 or more are recognized in this distinguished group. The Texas State Aquarium is grateful to the AQUA Society members for their commitment to further the mission of connecting people with nature and inspiring conservation of the Gulf of Mexico.

### Aquarium Visionary \$1,000,000 and up

The Brown Foundation, Inc.  
Janet\* & Edward H. Harte\*  
H-E-B  
Houston Endowment, Inc.  
Earl C. Sams Foundation, Inc.

### Aquarium Ambassador \$500,000-\$999,999

AEP Texas  
Flint Hills Resources, L.P.  
Kresge Foundation  
The Meadows Foundation  
Blanche Davis Moore Foundation  
Occidental Chemical Corporation  
T.L.L. Temple Foundation  
The Dobson Family & Whataburger  
The Wortham Foundation

### Aquarium Steward \$250,000-\$499,999

Arney Foundation  
Coastal Bend Bays & Estuaries Program  
D. D. Hachar Charitable Trust Fund  
Education Service Center, Region 2  
Gloria & Ed Hicks  
Holt Foundation  
Wayne A. Johnson & Family  
Estate of Katherine A. Johnson\*  
The John G. & Marie Stella Kenedy Memorial Foundation  
Robert J. Kleberg, Jr. and Helen C. Kleberg Foundation  
Bonnie Pereida\*

### Aquarium Conservator \$150,000-\$249,999

American Bank  
Betty\* & Joe\* Baria  
James R. Dougherty, Jr. Foundation  
Fulton Construction/  
Coastcon Corporation  
Howard Hughes Medical Institute  
Junior League of Corpus Christi  
Amy Shelton McNutt Charitable Trust  
Oceaneering International, Inc.  
Alice Heldenfels Sallee  
Valero Energy Corporation

### Aquarium Guardian \$100,000-\$149,999

Lana & Barry Andrews  
Behmann Brothers Foundation  
Marilyn & Tom Billings  
Dahlia McCord Carpenter\*  
Amon G. Carter Foundation  
Coastal Bend Community Foundation  
Coca-Cola Enterprises Inc.  
Exxon Company USA  
Foley's Department Store  
Sue & Gaylord Hoyt  
Institute of Museum and Library Services  
Cora\* & Thomas\* Keeler  
Caesar Kleberg Foundation for Wildlife Conservation  
London Broadcasting Company, Inc.  
McMains & Constant  
Dennis O'Connor  
Port of Corpus Christi  
Saltwater-fisheries Enhancement Association  
Strake Foundation  
Tetra Second Nature

### Aquarium Fellow \$50,000-\$99,999

Alcoa Foundation  
American Electric Power Foundation  
Andrews Distributing Company  
Bank of America  
Basic Industries of South Texas, Ltd.  
Coastal Conservation Association - Texas  
Charity League  
Cheniere Energy  
CITGO Petroleum Corporation  
Peggy & Bill Clark  
Corpus Christi Caller-Times  
Corpus Christi Exploration Company Foundation  
Judy & John Creveling  
Virginia\* & Randy\* Cutlip  
Martha & Charles DeCou  
ExxonMobil Foundation  
Fischer Foundation  
Fondren Foundation  
Golden Banner Press

Green Mountain Energy - Sun Club  
George & Mary Josephine Hamman Foundation  
IBC Bank  
The Joan and Herb Kelleher Charitable Foundation  
May "Topsy" King\*  
Lou Adele & Bob May  
The Larry & Pat McNeil Foundation  
NationsBank  
Navy Army Federal Credit Union  
Prichard Family Foundation  
Prosperity Bank  
Scripps Howard Foundation  
Snyder & Associates  
The Susser Family & Stripes  
Estate of Margaret Turnbull\*  
United Airlines  
University of Texas at Austin  
ValueBank Texas

### Aquarium Patron \$25,000-\$49,999

AG|CM, Inc  
Dan Alfaro & Associates  
Helen & R. C. Allen  
Arco Foundation  
BBVA Compass  
Beaumont Foundation of America  
John Boman  
Borden Insurance  
Mary & Charles Campbell  
Billie & William Carl  
Louise & John\* Chapman  
Rita & Bill\* Clements  
Copeland's Inc.  
Corpus Christi Produce Company, Inc.  
Elinor & Ben Donnell  
Lisa & John Dorn  
Jan & Jerry Dorsey  
Phyllis & George Finley  
Maxine & Lucien\* Flournoy  
Frost Bank  
Global Giving Foundation  
Paul & Mary Haas Foundation  
Haggar Foundation  
Harry W. Hamilton Foundation  
Joni & Nick Harrel  
Herndon, Plant & Oakley Ltd.

Hillcrest Foundation  
John Holmgren  
Susan Hutchinson & Owen Hopkins\*  
Hygeia Foundation  
Lady Bird Johnson\*  
Lee Jordan  
Lynda & Harris Kaffie  
Sam Kane Beef Processors, Inc.  
Kellogg  
Florence\* & Richard\* King  
Laredo Independent School District  
Crystal & Rick\* Mead  
Maureen & Bill\* Miller  
The Curtis and Edith Munson Foundation  
Patty & Henry Nuss  
Michael & Karen O'Connor  
Outback Steakhouse  
Padre Staples Mall  
Marjorie Parks  
Jennifer & Bob Patterson  
Joan & Bernard Paulson  
Beverly & Paul\* Pearson  
Carolyn & Daniel Pedrotti & Family  
Ella & Lev\* Prichard  
Quadrant Productions  
Ed Rachal Foundation  
Republic National Distributing Company  
Allen Samuels Chevrolet  
Virgie\* & T.S.\* Scibienski  
Barbara & Jerome Silverman  
William K. Snyder  
Deneece & Wayne Squires  
Nelda C. and H. J. Lutchter Stark Foundation  
Celika Storm  
Denise & Sergio Tavares  
Texas General Land Office  
TGS-NOPEC Geophysical Company  
TOR Minerals International, Inc.  
TXU Energy Corporation  
Welder Leshin, L.L.P.  
Wells Fargo Bank, N.A.  
Patsy & C. C. Winn  
Carol and Arthur Zeitler

\*Deceased



# 2011 Donors

## President's Council

### \$5,000+

Holt Foundation  
Yvonne H. Simard Foundation

### \$2,500-\$4,999

Lualhati S. Flynn  
Susan Hutchinson & Owen Hopkins\*  
The May Ranch  
Billie & Clayton Poenisch  
Port of Corpus Christi  
Ella Prichard  
Betty & Tom Terrey

### \$1,000-\$2,499

Lana & Barry Andrews  
Myriam & John Bell  
Harriet & Jim Blakey  
John Boman  
Vanessa & Fred Braselton  
Barbara & David Brown  
Mary & Charles Campbell  
Debbie & Tim Chapman  
Louise G. Chapman  
Cheniere Energy  
Peggy & Bill Clark  
Katherine & David Conoly  
Saundra & James H. Copeland  
Judy & John Creveling  
Bob Crow  
Maria T. de Ases  
Martha & Charles DeCou  
Lisa & John Dorn  
Phyllis & George Finley  
Kelley & Pat Frost  
Fran & Joe Fulton  
Fulton Construction/Coastcon Corporation  
Gloria & Robert Furgason  
Joni & Nick Harrel  
H-E-B  
Bob Hill  
Gail & Bruce Hoffman  
Chip Hough  
Betty Kemp  
Kathy & Flavius Killebrew  
L'Aiglon Foundation  
Ken Lay  
Barbara & Joe Lewis  
Leon S. Loeb  
Wallace Lundgren  
Lucy & Dick McCracken  
Victoria McGuire  
Julie & Michael McNeil  
Maureen Miller  
Dr. & Mrs. Robert A. Naism  
Patty & Hank Nuss  
Ted Oakley  
O'Connor & Hewitt Foundation  
Elizabeth Paisley  
Laura & Atlee Parr  
Joan & Bernard Paulson  
Bonnie Pereida\*  
Barbara & Joseph Prevratil  
Karen L. Ross, P.T.  
Keleigh & Stuart Sasser  
René & Frank Scanio, III

Denece & Wayne Squires  
Gina & Dan Stiefel  
Rick Stone Masonry, Inc.  
Celika Storm  
Catherine & Sam L. Susser  
Helen Swetman  
Daryl & George Tanner  
Denise & Sergio Tavares  
Joanne & Peter Volpe

## Aquarium Partnerships

AEP Texas  
Allied Waste Management  
Andy's Kitchen  
Basic Industries of South Texas, Ltd.  
Bay Ltd., A Berry Company  
Blue Bell Creameries, L.P.  
CITGO Petroleum Corp.  
Coastal Plains MHMR  
Corpus Christi Hooks  
Corpus Christi Regional Economic Development Corporation  
Corpus Christi Southside Lions Club  
Dawson Recycling  
Dix - Fairway Terminals, L.L.C.  
Dr. John Mason, D.D.S.  
Durrill Properties  
Felix Diesel Service, Inc.  
Ferrell/Brown & Associates, Inc.  
Fields, Nemec & Co., P.C.  
Flint Hills Resources, LP  
George Bush Presidential Library Foundation  
Green Mountain Energy  
Gulf Coast Paper Co., Inc.  
H-E-B  
John Michael Elizondo, DDS  
Linebarger Goggan Blair & Sampson, LLP  
Moore Insurance Agency  
Navy Army Federal Credit Union  
OxyChem  
Orion Drilling Company, LLC  
Padre Industries, Inc.  
Pepsi-Cola Bottling Company  
Permian Trading & Transportation  
Port of Corpus Christi  
Reliant Energy, an NRG Company  
South Coastal Area Health Education Center  
Time Warner Cable  
Valero Energy Corporation  
ValueBank Texas  
Wells Fargo Bank N.A.  
Whataburger, Inc.  
World Affairs Council of South Texas  
Your Sign Company, LLC

## Beach Ball

### Event Sponsors

Andrews Distributing  
Black Tie Affairs  
Butler Signature Events  
Corpus Christi Caller-Times  
Republic National Distributing Company  
Snyder & Associates  
United Airlines  
Bruce P. Hoffman, Wells Fargo Advisors

## Sandcastle Tables

AEP Texas  
The Dobson Family & Whataburger

## Beach Ball Tables

Basic Industries of South Texas Ltd.  
CITGO Petroleum Corp.  
Fulton Construction/Coastcon Corporation  
H-E-B  
Herndon Plant Oakley Ltd.  
The May Ranch  
Reliant Energy, an NRG Company  
Denise & Sergio Tavares  
Karen & Larry Urban  
Valero Energy Corporation

## Beach Blanket Tables

Peggy & Avinash Ahuja  
Ambrose Construction Ltd.  
American Bank  
Bank of America  
Borden Insurance  
Convergent Broadcasting  
Dugan Eye Institute  
Gloria & Ed Hicks - Ed Hicks Imports  
Ferrell/Brown & Associates, Inc.  
First Community Bank  
Flint Hills Resources, LP  
Frost  
FSG Lighting & Electric  
Gentry Company  
Huseman, Dodson & Hummell  
Lee R. Jordan  
The John G. & Marie Stella Kenedy Memorial Foundation  
McKibben, Woolsey & Villarreal, LLP  
Merrill Lynch - Dick McCracken, Kevin McCracken, Jay Wise  
Navy Army Federal Credit Union  
Orion Drilling Company, LLC  
Bonnie Pereida\*  
Peterson Development Corporation  
Port of Corpus Christi  
Radisson Hotel  
Marsha & Gregg Robertson  
Royston, Rayzor, Vickery & Williams, L.L.P.  
Kim & Tom Schmid  
Scott Electric Company, Inc.  
Catherine & Sam L. Susser  
Time Warner Cable  
Texas A&M University-Corpus Christi  
Wells Fargo Bank N.A.  
Wood, Boykin & Wolter, P.C.

## Surfer Girl and Surfer Dude Tickets

Susan & David Abarca  
Clarissa Beltran  
John H. Boman  
Corpus Christi Hooks  
Brenda & Robert Cuvelier  
Tom Daley  
Durham, Durham & Associates  
EOG Resources  
Dee & Dwayne Hargis  
Julie & Michael McNeil  
Crystal & Rick\* Mead  
Melanie & Ken Polasek  
Patricia & Dale Rasco  
Sally Reigle & Marcus McDonald

Stewart Title of Corpus Christi, Inc.  
Celika Storm  
Catherine & Sam L. Susser  
Carol & Art Zeitler

## Other Donations

A&B Communications  
Bay Ltd., A Berry Company  
Julie Buckley  
Cabot Cheese Cooperative  
Chili's  
Peggy & Bill Clark  
Coastal Tool & Supply  
Judy & John Creveling  
Lin & Jorge Del Alamo  
Garcia Photography  
Berta & Eddie Garcia  
Virginia Garcia  
Gill Landscape Nurseries  
Gloria & Ed Hicks - Ed Hicks Imports  
Joni & Nick Harrel  
Maureen Miller  
Pure Water & Ice Company  
Radisson Sandy Shores Beach Hotel  
Red Rover Imaging & Frames  
Keleigh & Stuart Sasser  
Shea Physical Therapy - Dan Shea  
Mamie & Alan Stoner  
Turner's Gardenland  
Wienerschnitzel  
Your Sign Company, LLC

## Live and Bidboard Auction Donors

Kathy & Joe Adame  
Andrews Distributing  
Best Western Downtown Inn & Suites - Houston  
BRG Designs  
Brinca!  
Desiree's By the Bay  
Dry Comal Creek Vineyards & Winery  
Ed Hicks Imports  
Fennessey Ranch  
Fisherman's Wharf  
Goodwin Family Trust  
Zoe & Mark Gottlich  
Grueene Historic District  
Grueene Mansion Inn  
Guy Harvey Inc.  
Hampton Inn & Suites - San Antonio  
Cathy & Bill\* Harrison and Yachting Center of Corpus Christi  
Gail & Bruce Hoffman  
Peter Holt-San Antonio Spurs  
Keetch and Associates Insurance  
Kelly's Kakes  
La Barataria Restaurant & Wine Bar  
Landa Park Golf Course  
Liquid Town  
Malek, Inc. - Spud O'Neal  
Melanie McWhorter  
Kenneth R. Melber  
Natural Bridge Caverns, Inc.  
Natural Bridge Wildlife Ranch  
Patty & Hank Nuss  
Omni Corpus Christi Hotel Bayfront and Marina  
Pepsi-Cola Bottling Company  
Pizza State



Republic National Distributing Company  
Rio Raft & Resort  
Marsha & Gregg Robertson  
René & Frank Scanio, III  
Skyview Aviation  
Small Planet Deli  
Deneece & Wayne Squires  
Taggart Motor Company  
The Back Porch Bar  
United Airlines  
ValueBank Texas  
White Stripe Catering Company  
Yolanda's Specialty Cakes  
Zulu Nyala Heritage Safari Lodge

### **Silent Auction Donors**

A Quiet Place  
Aartron Communications, Inc.  
Academy Sports & Outdoors  
Architectural Reclamation Designs  
Art Museum of South Texas  
Arts of Defense Martial Arts  
Diana Taylor Arturo  
Ascuba Venture, Inc.  
Angela Austin  
Auvil's Sweet Nothings  
Barbara's Fashion Jewelry  
Beamer's Restaurant  
Belly & Baby and Hopscotch  
Emily Bissell & Stewart Bissell  
Black Tie Affairs  
Blackbeard's Restaurants-Corpus Christi Beach  
& Ingleside  
Bleu Frog Mercantile  
Blossom Shop Florist  
BonnA-Petit  
Braslaw's Fine Home Furnishings  
Breakaway Tackle, Inc.  
Dani Breitenbucher  
Brewster Street Grill  
Bullfrogs and Butterflies  
Burning Bush Arts  
Cabot Cheese  
Carl's Flowers  
Casa de Oro Jewelers  
Catfish Charlie's  
Chelly B's Designs  
Peggy Chipman  
Concrete Street Amphitheater  
Cookies by Design  
James W. Cooper, DDS  
Corpus Christi Art Connection  
Corpus Christi Athletic Club  
Corpus Christi Hooks  
Corpus Christi Ice Rays  
Corpus Christi Museum of Science & History  
Corpus Christi Yacht Club  
T. Vance Crocker, DDS  
Czech Mex Bakery  
Disc Go Round  
Don Miguel Restaurant & Grill  
Dos Vaqueros-Rooke Ranch  
Dragonfly Hair Salon  
Eden Laser Medspa & Salon  
En Ritmo Dance Fitness  
First Community Bank, N.A.  
Foresight Golf, LLC  
Four Chicks in the Park  
Freebirds World Burrito  
Fruit Creations  
Furr's Fresh Buffet

Future Focus Family Medicine & Medical Spa  
Anita Garrett-Roe  
Bart German  
Rita & Robert Graham  
Gray Photography  
Hamlin Pharmacy  
Hanley Wood Fine Gifts  
Andrea J. Harwell  
Haynsworth Photography  
Hester's Cafe  
Jeremy Hintz  
Holiday Inn - Emerald Beach  
Houston Astros Baseball Club  
Houston Ballet  
Houston Symphony  
Houston Zoo, Inc.  
Hu-Dat Noodle House  
InStep Dance Studios  
KEDT-TV  
Evon & Bill Kelly  
Knolle Farm & Ranch B&B  
Jonathan C. Kolb, DDS  
La Playa Mexican Cafe  
Luciano's Italian Ristorante  
Mandarin Gardens  
Market  
McAlister's Deli  
Sally Reigle & Marcus McDonald  
McKenna Children's Museum  
Moby Dick's  
Moody Gardens  
Moody's Quality Meats  
Nature Works  
Mary & John Norris  
Outback Steakhouse  
Outlaws in Stones  
Padre Island Surf Camp  
Sarah Paige  
Papa Murphy's Pizza  
Pier 99  
Pilar Eclectic Jewelry  
Planet Sol Salon & Day Spa  
Prints Charming Designs  
Pure Fitness Solutions, LLP  
Railroad Seafood Station  
Rainbow Books  
Republic of Texas  
Cheryl L. Rhoden DDS LLP  
Robin Jackson Photography  
Rockin' H Ranch Designs  
Romano's Macaroni Grill  
Sam Houston Race Park  
Monica Sanderson  
Seashell Village Resort  
Seems Paneless  
Singer Sewing Center  
Snoopy's Pier, Inc.  
South Texas Botanical Gardens & Nature Center  
Southern Charm, LLC  
Spoke'n Cog  
Stein Mart, Inc.  
Texappeal Gifts  
Texas A&M Health Science Center- Coastal  
Bend Health Education Center  
Texas A&M University-Corpus Christi Athletics  
Texas Surf Camps  
Texas Zoo  
The Buckhorn Saloon & Museum & The Texas  
Ranger Museum  
The Children's Museum of Houston  
The Kotton Patch Krafters

The Loft @ Lamar Park  
The Storage Place  
The Promise in Glen Rose, Inc.  
The Venetian Hot Plate  
The Woodhouse Day Spa  
Treehouse Art Collective, LLC  
Tubbs of Flowers  
Jim Urban  
USS Lexington Museum on the Bay  
Vietnam Restaurant  
Peni & Lanny Wadkins  
Wal-Mart Super Centers  
Whataburger, Inc.  
William's Fashion Shoes  
Lissa & Rolf Woods  
Yummies 1950s Restaurant

### **Restricted Funds**

#### **Animal Husbandry**

Bill Davis  
Moody's Quality Meats  
Earl C. Sams Foundation, Inc.

#### **Aquarium Operations**

AAA Medical Supply  
Nicole Andrade  
The Dobson Family & Whataburger  
Blanche Davis Moore Foundation  
Reflections Ice Sculptures

#### **Capital Campaign**

The Brown Foundation  
Louise G. Chapman  
Lualhati S. Flynn  
Lee Jordan  
Vera S. McGonigle  
Amy Shelton McNutt Charitable Trust  
Crystal & Rick\* Mead

#### **Conservation Cove**

Berta & Eddie Garcia  
Gayle & Neal Runnels

#### **Dolphin Bay**

David & Katherine Conoly  
Saundra & James H. Copeland  
Golden Banner Press, Inc.  
Ticia & Marty Hanisch  
Alice H. Sallee

#### **Education**

Mary & Phil Anderson  
Coastal Bend Community Foundation  
Flint Hills Resources, L.P.  
Florida Department of Financial Services  
The Prichard Family Foundation  
State Farm Insurance Companies  
The John G. & Marie Stella Kenedy Foundation  
Wal-Mart Foundation

#### **Gloria Hicks Educational Endowment**

Sylvia & Mark Whitmore

#### **July 4th Picnic**

Grunwald Printing Company

#### **H-E-B Splash Park**

Rhian Alaniz  
Adrian Alvarado  
Nicole Andrade  
Anonymous  
Candy Arreola  
Jearim Arteaga  
Lauren Attaway

Ashley Bainbridge  
Reyna Banda  
Behmann Brothers Foundation  
Kristin Bell  
Keith Bethel  
Analise Bradford  
Kayla Brunner  
Leon Burns  
Meagan Campos Bushell  
Adriana Reza  
Jessica Cantu  
Amanda Castro  
Sandy Cherniss  
Alyssa Conrad  
Beth Davis  
Dolores De la Cruz  
Amber Diaz  
Deborah Edwards  
Lacy Ellis  
Erin Erben  
Julio Flores  
Ernest Franklin  
Julie Galbraith  
Liz & Roark Gallagher  
Perla Garcia  
Lisa Garza  
Emma Gilbert  
Jesse Gilbert  
Rosanna Gossett  
James Green  
Rachael Griffith  
Heather Guerrero  
H-E-B  
Kara Hahn  
Henry Hall  
Richard Harris  
Jason Heivilin  
Diana Hernandez  
Sally Hoke  
Peggy Issitt  
Jennifer Johnston  
Patrick Kierst  
Ester Lazo  
Douglas Lewis  
Brian Lorentson  
Conseulo Luna  
Emiliano Martinez  
Glenda Martinez  
Norma Martinez  
Emilee McBride  
Kelsey McFarland  
Kasie McNabb  
Crystal & Rick\* Mead  
Maggie Medrano  
National Instruments  
Rudy Noriega  
Jack Nyitrai  
Jessica O'Brien  
Nicole O'Donnell  
Brooklyn Olive  
Ruben Ortiz  
Gregory Padia  
Amanda Pena  
Charles Perron  
Roel Ramirez  
Sammie Ramon  
Sally Reigle & Marcus McDonald  
Ignacio Rodriguez  
Ebony Ruiz  
Carole Savage  
Kim & Tom Schmid



Brianne Secorsky  
Justin Sefcik  
Kelley Shutt  
Jason Slade  
Randy Slayton  
Kellie Smith  
David Stelling  
Katherine Strauser  
Yolanda Tanguma  
Kelsey Thomas  
Marcella Torres  
Joel Trevino  
Carlos Urrea  
Imelda Villarreal  
Rosalinda Villarreal  
Charmaine & Jerry Wade  
The Woman's Club of Aransas Pass  
The Woodlands Christian Academy

### Stingray Lagoon

Megan Adams  
Nicole Andrade  
Debra Armstrong  
Jerry Arreola  
Lauren Attaway  
Jane & Frank Bachman  
Ashley Bainbridge  
Jose Bazan  
Kristin Bell  
Brenda Bennett  
Keith L. Bethel  
Robert Bidwell  
Dani Breitenbucher & Peggy Chipman  
Barbara Brooks  
Auburn Buehring  
Carter L. Burns  
Rachel Cabrera  
Adriana Campos Reza  
Nina Cardenas  
Lorissa Chapa  
Sandy Cherniss  
Beth Davis  
Amber Diaz  
Deborah Edwards  
Lacy Ellis  
Erin Erben  
Morgan M. Finley-Win  
Julio Flores  
Ernest Franklin  
Julie A. Galbraith  
Liz & Roark Gallagher  
Perla Garcia  
Amy Genovese  
Emma Gilbert  
Jesse Gilbert  
Deborah Goggans  
Andrea Gomez  
Megan Gonzales  
Rosanna Gossett  
James Green  
Mary Grace Grieves  
Jessica Grumman  
Heather Guerrero  
Richard Hafemeister  
Kara Hahn  
Donald Halepeska  
George & Mary Josephine Hamman  
Foundation  
Rebeca Harris  
Richard Harris  
Jacob Hasek  
Diana L. Hernandez

Martha Hill  
Sally Hoke  
Sally Howden  
Margaret P. Issitt  
The Joan & Herb Kelleher Charitable  
Foundation  
Patrick Kierst  
Roxanne Kierst  
L'Aiglon Foundation  
Ester Lazo  
Krystin N. Leonard  
Douglas E. Lewis  
Stephany J. Lopez-Reyn  
Robert Luckett  
Conseulo Luna  
Daniella Marez  
Emiliano Martinez  
Glenda Martinez  
Norma Martinez  
Emilee McBride  
Kelsey McFarland  
Kari McKeenan  
Larry & Pat McNeil Foundation  
Crystal & Eric\* Mead  
Kaleigh Mitchell  
Blanche Davis Moore Foundation  
George Munroe  
Rudy Noriega  
Jack Nyitrai  
Jessica O'Brien  
Nicole O'Donnell  
Ruben Ortiz  
Gregory Padia  
Judy & Carroll Pate  
Mathew Pena  
Natalie Perez  
Paul David Perez  
Charles Perron  
Andrea Pleasant  
Keri Plevniak  
Deborah Prevratil  
Jennifer Quesada  
Ashley Quiroga  
Ed Rachal Foundation  
Stephanie Rivera  
Hazel Robertson  
Cassandra Rodriguez  
Ignacio Rodriguez  
Carole Savage  
Kim & Tom Schmid  
Lauren Schneider  
Tara Schultz  
Brianne Secorsky  
Justin Sefcik  
Linda Shirey  
Kelley Shutt  
Yvonne H. Simard Foundation  
Jason Slade  
Randy Slayton  
Kellie Smith  
Leigh Smith  
Israel Soliz  
Alyssa Squiers  
David Stelling  
Alan & Mamie Stoner  
Chris Swanson  
Yolanda Tanguma  
Emily Taylor  
Kelsey Thomas  
Kellie Timms  
Jazmyn Torres

Marcella Torres  
Joel Trevino  
Kelly Trevino  
Stacy Trevino  
Imelda Villarreal  
Carrie Virga  
Russell Voigt  
Chelsea Watson  
Lauren Wessel  
Tarissa Wheless  
Carol & Dennis Whitley  
Alexis Wickersham  
Emily Williamson  
Elaine & Richard Yellen  
Shannon Zastoupil

### Weston's Library

Anonymous  
Diane & John Brennan  
Carolyn & Bill Conoly  
David & Katherine Conoly  
Beth Davis

### Wetlands Walk

The Dudley T. Dougherty Foundation  
Global Giving Foundation,  
Pepsi Refresh Project

### Wildlife Rehabilitation Program

A Place Called Hope  
Anonymous  
Barbara Baird  
Lee & Charles Baskin  
Brenda Blackwood  
Sheila C. Cahalane  
Jeannie Cuiiss  
Max Duncan  
Cynthia Einkauf  
Ashley S. Ellis  
EOG Resources  
The John G. & Marie Stella Kenedy Memorial  
Foundation  
Rose Ann & Mark Kozlowski  
Allen Light  
Gloria Light  
Barbara Little  
Elaine Lloyd  
John D. Lowe  
Michael L. Mauldin, D.D.S., P.C.  
Arthur C. Mullenax  
Lorrie Pierce  
Linda C. Samford  
Earl C. Sams Foundation, Inc.  
Doan Shockley  
Calvin T. Smith  
Jason W. Sugg  
Lee Yorns

### Annual Giving

#### \$500+

Kathy & Joe Adame  
Anonymous  
Marilyn & Tom Billings  
Cindy & Roger W. Borgelt  
Ms. Glenda Vickery & Dr. Michael Burke  
The Sam L. Susser Donor Advised Fund of the  
Coastal Bend Community Foundation  
Debbie & Darrell Coleman  
Henry F. Fey  
Maxine Flournoy  
Frontier Surveying  
Susan & Martin Giesecke  
Mr. & Mrs. Brian Hagemann

Dan Richter  
Ruth Ann Stigall

#### \$250-\$499

Jan & Dan Aronson  
Lynn Baria  
Fran Wilms & Ernest Buck  
C. Thomas Cron  
MaryJane & Carl Crull  
Marge DeWitt  
Grainger Matching Charitable Gifts Program  
Christina Hawn  
Virginia & Nicholas Jevric  
Bettye & Jack Nichols  
Lois Nickerson\*  
Jeanne & Rick Schafer  
Betty Schultz  
Dr. & Mrs. Lonnie Schwirtlich  
Dorothy & Tom Shockley  
Stephanie & Benjamin Smith  
Mamie & Alan Stoner  
Becky & Jerry Van Beveren

#### \$150-\$249

Aletha & Bill Anderson  
Julia Bell  
Mitzi & Daniel Bluntzer  
Rosie & Ruben Bonilla  
Burch Farms  
Janel & Ron Carlisle  
Lois Chesney  
Peggy & Jose M. Duran Mu  
ExxonMobil Foundation  
Donna & Bobby Gough  
Joan & Donald Halepeska  
Judith & David Hawley  
Anne Holt  
Richard L. Ingraham, DDS, MS, PA  
Carolyn B. Jackson  
LuAnn & Donald Kingsbury  
Sally S. Kleberg  
Mandy & Will Loeffler  
Joann Luckie  
Ralph C. Lutz  
Sally & Herbert Madalin  
Linda & Billy McCracken  
Cindy & Robert Miller  
Eugene Pennebaker  
Sandra Petta  
Patricia Riek  
Bobby & Rocco Rodriguez  
Maria Luisa Salinas  
Kevin Stafford  
Alice Sutherland  
Carol & Dennis Whitley  
Shirley & Kenneth Windhorst  
Linda & Charles Zahn

#### \$100-\$149

Caroline & Paul Altheide  
Joann & Jerome Bollom  
Bonilla & Chapa  
Sara & Michael Galullo  
Norma Jeanne & H.B. Hause  
Jackie & Tony Hein  
Ann & Bruce Hendrickson  
Katrina & Michael Hernandez  
Johnson & Johnson Matching Gifts Program  
Sally & James S. King, Jr.  
Lyondell Basell Matching Gifts Program  
Deborah & Glenn Nichols  
Charmaine & Jerry Wade  
Edwin Whitney



Joyce & Norman Wilcox  
Barbara & Mitchell Wommack

### **Up to \$99**

Anonymous  
AT&T Foundation Matching Gifts Program  
Olivia Babbitt  
Kirby & Kaaren Barker  
Cathy & Ron Barnard  
Mary & Larry Bos  
Karen & John Bowen  
Jennifer & Thomas Buttram  
Karen Carr  
Wilma & Louis Cattana  
Melissa Celeski  
Peggy & Wilbur Cleaves  
David Colameco  
Edgar Cortes  
Vicki Cunningham  
Lorraine & George Dawson  
Barbara Enloe  
Jackie & Matthew Evans  
Regina & John Findeisen  
Almira Flores  
Stephen Fuqua  
Aisha & Micheal Gonzalez  
Deborah Hagar  
Kathy Harris  
Belinda & Stephen Hartwick  
Karen & David Henny  
Gail & Bill Huie  
Pat & Abdul Huwel  
Beth & Michael Landis  
Romana Lang  
Toni Limas  
Tosby Linn  
Marie & Rocco Logiodice  
Law Office of Lance Jay Luchnick  
Erma J. Lund  
Marie & Don Maddox  
Cyndi Mann Broussard  
The McCarty Family  
Billy Lawrence & Jenny McChesney  
Anita & Jimmie McKinney  
Paula McKinney  
Brandi & William McMonagle  
Esteban Montez  
Stephanie Moran  
Elizabeth & Paul Munson  
National Instruments  
Amy O'Donnell  
Nicole O'Donnell  
Pamela Parker  
Natalie Perez  
Jay Phagan  
Deborah L. Prevratil  
Genora Prewit  
Angela & Jeremy Pyatte  
Varnell & Calvin Rayes  
Sally Reigle & Marcus McDonald  
Barbara & Michael Reischman  
Mary Rodman  
Patty J. Rogers  
Hilda & Antonio Sanchez  
Melinda & Art Sanchez  
Josephine E. Schmidt  
Kellie Smith  
Eugene J. Snouffer  
Addison Solheid  
Kim & L.J. Thompson

Judith & Ralph Tom  
Maria Trevino  
Margie & Jerry Vogel  
Beverly B. Wallace  
Craig Walley  
Water Works of Texas  
Susan & Nixon Welsh  
Keith Wilson  
Mrs. John N. Wylie, Jr.

### **Honor and Memorial Contributions**

#### ***In Honor of Nelda Beltran***

Hilda & Antonio Sanchez

#### ***In Honor of Greg Buck***

Ernie Buck & Fran Willms

#### ***In Honor of Mr. & Mrs. William A. Clark; Mr. & Mrs. Will Clark; Ms. Kittie Clark***

Sally S. Kleberg

#### ***In Honor of Mr. Barrett Fines***

Vicki Cunningham

#### ***In Honor of B.D. Holt***

Anne Holt

#### ***In Honor of Amy & David Isiaho***

Stephen Fuqua

#### ***In Honor of Sophie Klechka***

Marie & Rocco Logiodice

#### ***In Honor of Robert A. May***

Ann & Bruce Hendrickson

#### ***In Honor of Paul & Barbara Smittle***

Betty Schultz

#### ***In Honor of Gerald Sutherland***

Alice Sutherland

#### ***In Honor of Mr. & Mrs. Jerry Winkler***

Deborah Hagar

#### ***In Memory of Louis A. Beecherl, Jr.***

Marilyn & Tom Billings

#### ***In Memory of Chris Bratten***

Jeanne & Rick Schafer

#### ***In Memory of William "Bill" Carl***

Bonilla & Chapa

Louise G. Chapman

Norma Jeanne & H.B. Hause

Sally & James S. King, Jr.

Tosby Linn

Barbara & Mitchell Wommack

#### ***In Memory of Sue Ellen Cron***

C. Thomas Cron

#### ***In Memory of Dr. Randall B. Cutlip***

Amy Shelton McNutt Charitable Trust

#### ***In Memory of Aunt Dee***

Diane & John Brenan

#### ***In Memory of Frank Doherty***

Diane & John Brenan

#### ***In Memory of Roberta Bell Fey***

Henry F. Fey

Erma J. Lund

Marie & Don Maddox

Michael L. Mauldin, D.S.S., P.C.

Josephine E. Schmidt

Margie & Jerry Vogel

#### ***In Memory of Captain Daniel & Barney Flynn***

Lualhati S. Flynn

#### ***In Memory of Peggy Hays***

Susan E. Green

#### ***In Memory of Paul LaBarge***

Diane & John Brenan

#### ***In Memory of Lesta Inez Luckett***

Robert Luckett

#### ***In Memory of Carol A. Lutz***

Ralph C. Lutz

#### ***In Memory of Debbie McDonald***

Diane & John Brenan

#### ***In Memory of William Morgan***

Joann & Jerome Bollom

#### ***In Memory of Mary A. Riek***

Patricia Riek

#### ***In Memory of Normalinda Salinas***

Maria Luisa Salinas

#### ***In Memory of Jimmy Spoon***

Joann & Jerome Bollom

#### ***In Memory of Bill Volk, Jr.***

Diane & John Brenan

#### ***In Memory of George C. Westervelt***

Addison Solheid

### **Owen's Paleo Park**

#### ***In Memory of Owen Hopkins***

Caryl & James Devlin

E.W. Elliott

FESCO Petroleum Engineers

Steven Findley

Flournoy Family Properties LTD

Brent Hopkins

Marybeth & Bill Maxwell

Michael D. Oloughlin

Carolyn & Daniel Pedrotti

D. Craig Valassis

Doug T. Valassis

David Webster

### **Circle Members**

#### ***Executive Circle - \$750-\$999***

Chris Nicosia

Theresa Nowitzky

#### ***Trustee's Circle - \$500-\$749***

Callie Ahuja & Tracy Riggs

Debbie & Darrell Coleman

Lura & Thomas Dietz

Sylvia Earle

Judith & David Hawley

Kaye & William Quinton

Ralph Storm

Melanie & Richard Thomas Jr.

#### ***Director's Circle - \$250-\$499***

Brenda & Royce Cameron

Nancy DeSutter

Paula & Rick Dodd

Ann & David Engel

Marlive & Michael Fitzpatrick

Donna & David Goff

Gaylord & Sue Hoyt

John Huelsen

Ronald Javitch

Robin & John Kennedy  
Rebecca Kieschnick  
Sherry & Charles Kolb  
Ursula & Nathan Kolenovsky  
Liz & Leon LeVan  
Robert Lewis  
James McClelland  
Nancy & Sharon McElwee  
Mary A. Morris  
Sally Reigle & Marcus McDonald  
Marsha & Gregg Robertson  
Roetta & Mark Rock  
Judy & Evan Schulz  
Dr. & Mrs. Lonnie Schwirtlich  
Lynn & Jim Shiner  
Tom & Dorothy Shockley  
Michelle & Jimmy Simmons  
LeAnn & Troy Snody  
Jane & Wesley Stafford  
Elivira & Carlos Truan  
Annette & Keith Ueckert  
Edward Varnador  
August Vance Vorndam  
Patricia & Ben Wallace  
Joanna & Gordon Weidman  
Linda & Charles Zahn

#### ***Curator's Circle - \$150-\$249***

Kathy & Richard Adams  
Brandey Albrecht  
Rita Alder  
Phyllis & Sam Allen  
Nancy Anderson  
Anonymous  
Anonymous  
Jo Leigh Ares & Louis Zimmerer  
Melissa & Tim Ashley  
Juan Ayala & Belia Stowe  
Paul K. Ayars Family  
Abigayle Barton  
Lee & Charles Baskin  
Nancy & Drake Beauchamp  
Cindy & Mike Boudloche  
Dannielle Bowden  
Katherine Brawner & Robert Lutter  
Dr. & Mrs. Russell D. Briggs  
Peggy Brockenbush  
Cheri & Chris Bumpas  
Sally Carter & Alan Griffin  
Tina Chapman  
Rebecca Char-Johnson  
Angelina & Wallace Childs  
John Cicala  
Wendy Cisneros  
Rigoberto Contreras Jr  
Cathy & Kenneth Cook  
Judy & Kevin Corrigan  
Christina Cowan  
Tonya Coy  
Patricia & Patrick Coym  
Paul & Betty Crawford  
Caryl & James Devlin  
Laura & Walt Dobbs  
Liza & Juan Dominguez  
Patty & Eddie Dunn  
Jewel & Leslie Dunn  
Peggy & Jose M. Duran MD  
Miranda Elizalde  
Monica & Scott Ellison  
Celia T. Escamilla



Michael Esparza  
 Andrew Folley & Lorree Taylor  
 Ryan Ford & Jeanette Bonoan  
 Mary & Ali Ghaffari  
 Mary Carol Griffith  
 Jane & Albert Guinn  
 Lina & Joel Hall  
 Kim & Matt Hammer  
 Nancy C. Harwell  
 Peggy Ann Harwell  
 Christina Hawn  
 Teresa M. Hemmert  
 Hedy & Delbert Hooper  
 Pamela & Michael Kavanagh  
 Cynthia & Peter Kendig  
 Rebecca & Danny Klaus  
 Diane L. Klutz  
 Melanie Konarik  
 Sandra Lambert  
 John Leal & Rose DeLuna  
 Mauro Leija  
 Yericca & Ernesto Leon  
 Toni Limas  
 Priscilla & Richard Lon  
 Pam & Ramsey Longbotham  
 Cynthia & Lionel Longoria  
 Elizabeth & Dale Loveland  
 Deborah Macziewski & Susann Johnson  
 Isabel Martinez & Carlos Martinez-Quinones  
 Kim & Frank Martinez  
 Amanda Martini  
 Adireana Mata  
 Carroll Matthews  
 Sue & Fred Maurer  
 Melba & Curtis Maynard  
 Kelly & Stan McDonald  
 Kerrie McLemore  
 Amy & Donald Melrose

Kristy Middaugh  
 Sandra & Dennis Migl  
 Karen & Joseph Montgomery  
 Elizabeth & Walter Muffoletto  
 Diane Nhan  
 Walta Ocker  
 Evangelina Olivarez  
 Sherdeana Owens-Estakh  
 Coralie & William Payton  
 Eugene Pennebaker  
 Linda & Alfonso Prado  
 Monica Ramirez  
 Adam Reed  
 Mary Robinson  
 Tina Salem & Walter Boyd, III  
 Kyle & Elda Shipley  
 Susan & Thomas Shirley  
 Karen Smith  
 Neona Smith-Solt & Glenn Solt  
 Martha St. Romain  
 Catherine Stein  
 Dee & Ted Stephens  
 Scott Stridde  
 Crista & Rick Swetish  
 Carol Talbot & A.J. Koska  
 Barbara & John Theiss  
 Renee Thomas  
 Susan & Lawrence Tiller  
 Wanza Treybig  
 Jaime Valdez  
 Judith L. Walker  
 Jo Vann & Charles Weichert  
 Carolyn & Michael Westergren  
 Elizabeth Williams  
 Jeana Wilson  
 Sandra Woolsey  
 Vernon A. Wuensche  
 Elizabeth Zamora-Lerma

## Texas State Aquarium Board of Trustees

### 2011 OFFICERS

Judith Hawley, Chair  
 Rich D. Tuttle, Past Chair/  
 Parliamentarian  
 Lee R. Jordan, Vice-Chair/  
 Chair-Elect  
 Bruce S. Hawn, Vice-Chair  
 Denise Tavares, Secretary  
 Paula Dodd, Treasurer

Dr. Flavius Killebrew  
 Donald E. Kingsbury  
 Edward A. Martin  
 Robert A. May  
 Dr. Larry McKinney  
 Julie McNeil  
 Mark Meyer  
 Josephine Miller  
 Maureen Miller  
 Patty Nuss  
 J. Ted Oakley  
 Rakesh Patel  
 Bonnie P. Pereida  
 Dan Richter  
 Gayle Runnels  
 Alice H. Sallee  
 Keleigh H. Sasser  
 Frank J. Scanio, III  
 Mike Shaw  
 Deneece Ann Squires  
 Celika Storm  
 Sam L. Susser  
 Nathan Taggart  
 Larry Urban  
 Sylvia Whitmore

### BOARD OF TRUSTEES

Joe Adame  
 Esperanza Andrade  
 Barry Andrews  
 Allen G. Borden  
 Reagan Brown  
 Willard E. Brown, III  
 Julie A. Buckley  
 Darrell G. Coleman  
 John W. Creveling, Jr.  
 Thomas E. Dobson  
 Elinor Donnell  
 John F. Dorn  
 Pat Frost  
 Dr. Robert R. Furgason  
 Eddie L. Garcia  
 Mark Gottlich  
 Rob Hall  
 Joni Harrel  
 R. Scott Heitkamp  
 Charles A. Hicks  
 Gloria Hicks  
 Peter Holt  
 Susan E. Hutchinson

*Trustees Emeritus*  
 R.C. Allen  
 Charles C. Butt  
 Peggy Lasater Clark  
 Arthur W. Zeitler



## Texas State Aquarium Leadership

Tom Schmid, President & CEO  
 Julio Flores, Vice President of Finance & CFO  
 Heather Guerrero, Chief Development Officer  
 Richard Glover, Director, Marketing &  
 Communications  
 Liz Gallagher, Director, Sales  
 Jesse Gilbert, Director, Animal Husbandry  
 Jack Nyitrai, Director, Maintenance Operations  
 Tara Schultz, Director, Education & Interpretation



TEXAS STATE AQUARIUM



RECYCLES



TEXAS STATE  
AQUARIUM®

Texas State Aquarium  
2710 N. Shoreline  
Corpus Christi, Texas 78402-1097  
(361) 881-1200  
[www.texasstateaquarium.org](http://www.texasstateaquarium.org)